

# GaBi Software 9.2 & GaBi Databases 2020 Upgrade Guide and Important Instructions

February 2020



## List of Contents

Introduction and overview .....	2
1. Update your GaBi Software.....	4
2. Upgrade your databases to GaBi Databases 2020 Edition.....	5
3. Accessing new datasets.....	8

## Introduction and overview

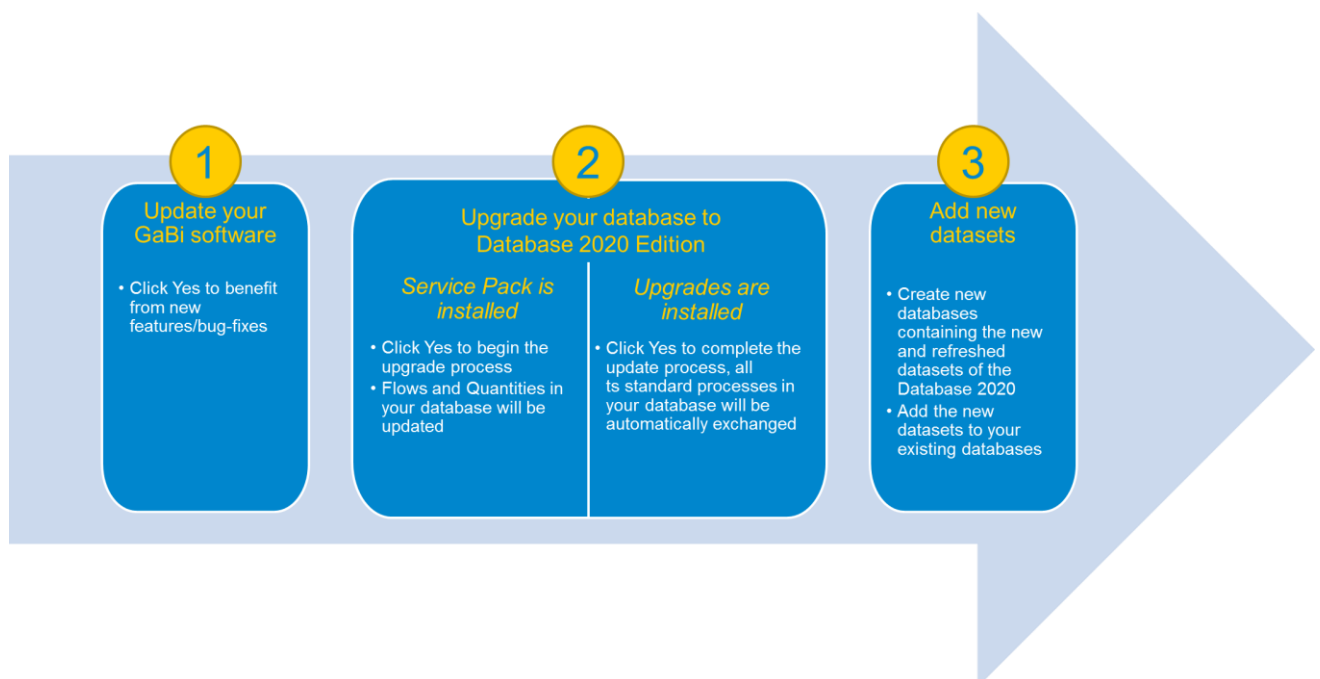
**Sphera** is proud to deliver, as part of your annual GaBi maintenance package, the new fully upgraded database content! This guide will take you step by step through the upgrade procedure. Learn more about the GaBi Databases 2020 Edition content [on our website](#).

The yearly database upgrade process has several steps. It consists of the GaBi software update, the service pack and database upgrade, and the addition of new data sets.

The first step is to update your GaBi software to the latest version. After this, each time you activate one of your databases for the first time, you'll be asked if you want to upgrade it. Choosing 'Yes' will start the upgrade process. We recommend to do so, while you can choose to continue using the old version, e.g. if you are close to complete a project. The upgrade itself is done in three steps:

1. Flows and quantities are upgraded via a Service Pack installation.
2. Original GaBi plans and processes are exchanged with their upgraded equivalent.
3. All the new content in GaBi Databases 2020 Edition for the databases you've licensed, is made available in a newly created database.

Here is an overview of the procedure:



## Important information about your software and databases upgrade

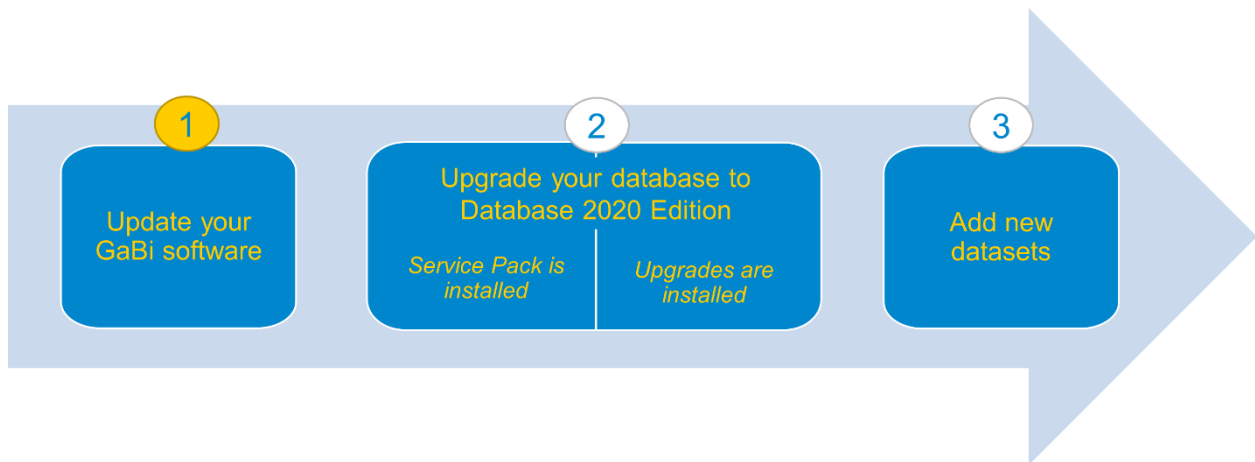
- The software update is a fast step, taking a few minutes. It does not change any content of your databases.
- The subsequent database upgrade – initiated database per database as you activate them - will exchange all Sphera processes in your models with updated Sphera processes. This will change the results of your models.
- The database upgrade is a very time-demanding process, **which can last several hours for each database. Please do not stop the upgrade, even if you have the perception, that GaBi is not reactive anymore.** We recommend disabling your computer's energy settings to go into standby mode for the upgrade and to leave the upgrade running over night.

Especiallyecoinvent databases need a very long time to be upgraded due to the number of processes processed.

As a matter of fact, the time needed to upgrade your database can vary due to several factors (computer performance, size of overall database, number/complexity of plan models included in the database).

- Approximately 350 new LCI datasets have been added across all GaBi databases. To access the new data that is part of the databases that you have licensed, please read the last section of this document “Accessing new datasets”.
- If you encounter any difficulties in the installation/database upgrade processes, please send an e-mail to [gabi-support@sphera.com](mailto:gabi-support@sphera.com).

## 1. Update your GaBi Software



GaBi version 9.2 will be available to you via the automatic update functionality in the GaBi software. No new installation procedure will be necessary.

On February 20<sup>th</sup>, 2020, the new software version will be available on the GaBi update server – GaBi software will prompt you to download the updated version.

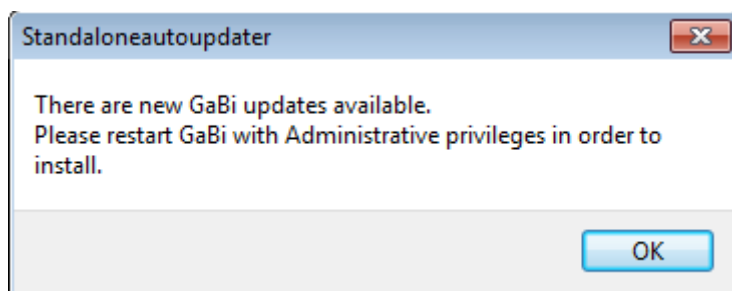


Figure 1: GaBi Update notification

If you do not have a valid maintenance contract or active subscription license, you will not have access to this update and GaBi software will not inform you about the availability of the new version. Please contact your local GaBi sales representative for a quote.

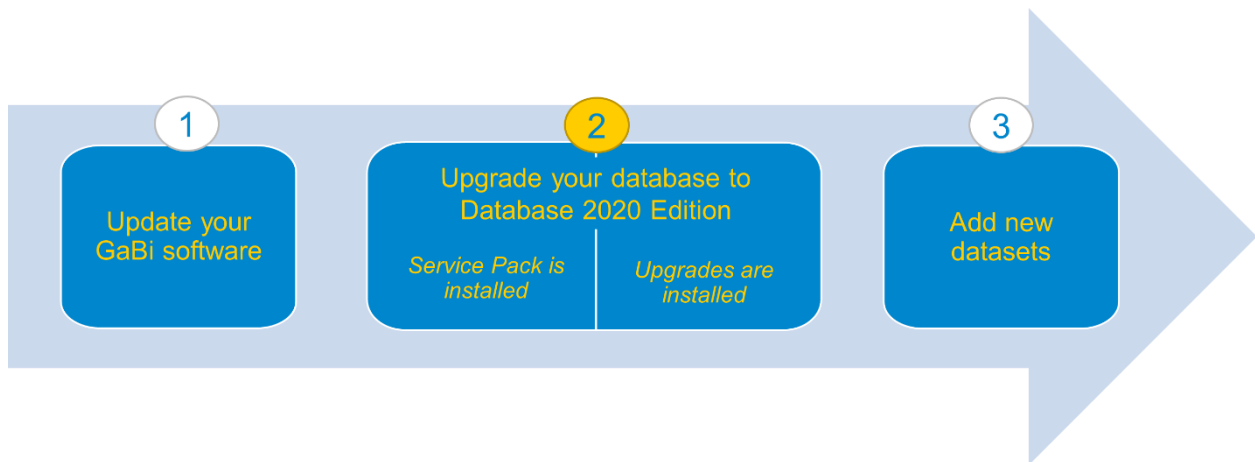
To download and install the new version, you need administrative user rights for Windows. (Restart GaBi by right-clicking your mouse and choosing ‘Run as Administrator’.) If you do not have the necessary user rights, please contact your IT support.

Note that after the upgrade, databases that were previously connected are no longer visible, because GaBi was started as a Windows administrator and not with your standard windows user account. Simply restart GaBi to see them again.

If the connection to the update server cannot be established for some reason, an error message with the cause of the problem will appear (“Host <http://service.thinkstep.com> unreachable” or “Could not find file on developer side”). In this case, please send an e-mail to [gabi-support@sphera.com](mailto:gabi-support@sphera.com) and we will provide you with an alternative solution to update your GaBi software.

Now that your GaBi software is up-to-date, you can either upgrade your databases to the GaBi Databases 2020 Edition or **you can keep your database content at an earlier level.**

## 2. Upgrade your databases to GaBi Databases 2020 Edition



### Required Disk Space

Before starting a database upgrade, make sure you have enough free disk space. We recommend you have three times as much free disk space as the size of the database that you want to upgrade. GaBi will always write a database backup so you will never lose the database version as it was before.

As a general rule, GaBi writes the backup to this location:

C:\Users\[your Windows user name]\Documents\GaBi\DB\\_DB BACKUPS

If this path is not located on your hard disk, but on a server, you may also need to check whether you have enough disk space on your server located Windows profile.

### Upgrade procedure

To upgrade your databases to GaBi Databases 2020 Edition (and thereby upgrade your database content and results), you need to install the Service Pack 40 and database upgrades.

First, when activating any of your databases, you will see the following dialogue. For upgrading the content of that specific database, please accept the installation of Service Pack 40:

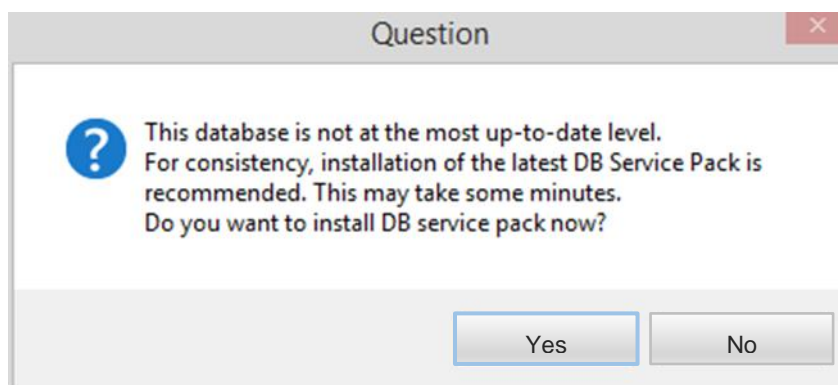


Figure 2: Service Pack installation window

Next, the Database Upgrade installation window will appear.

**Important Note:** The upgrade process can take several hours depending on the size of the database and the performance of your computer. This process should not under any circumstances be interrupted (even if GaBi appears to be 'Not Responding').

Click “Yes” to start the installation of the database upgrades. Note that in case you did not install any preceding upgrade (e.g. Service Packs 38), these will also be installed, all one after the other without the need for user interaction.

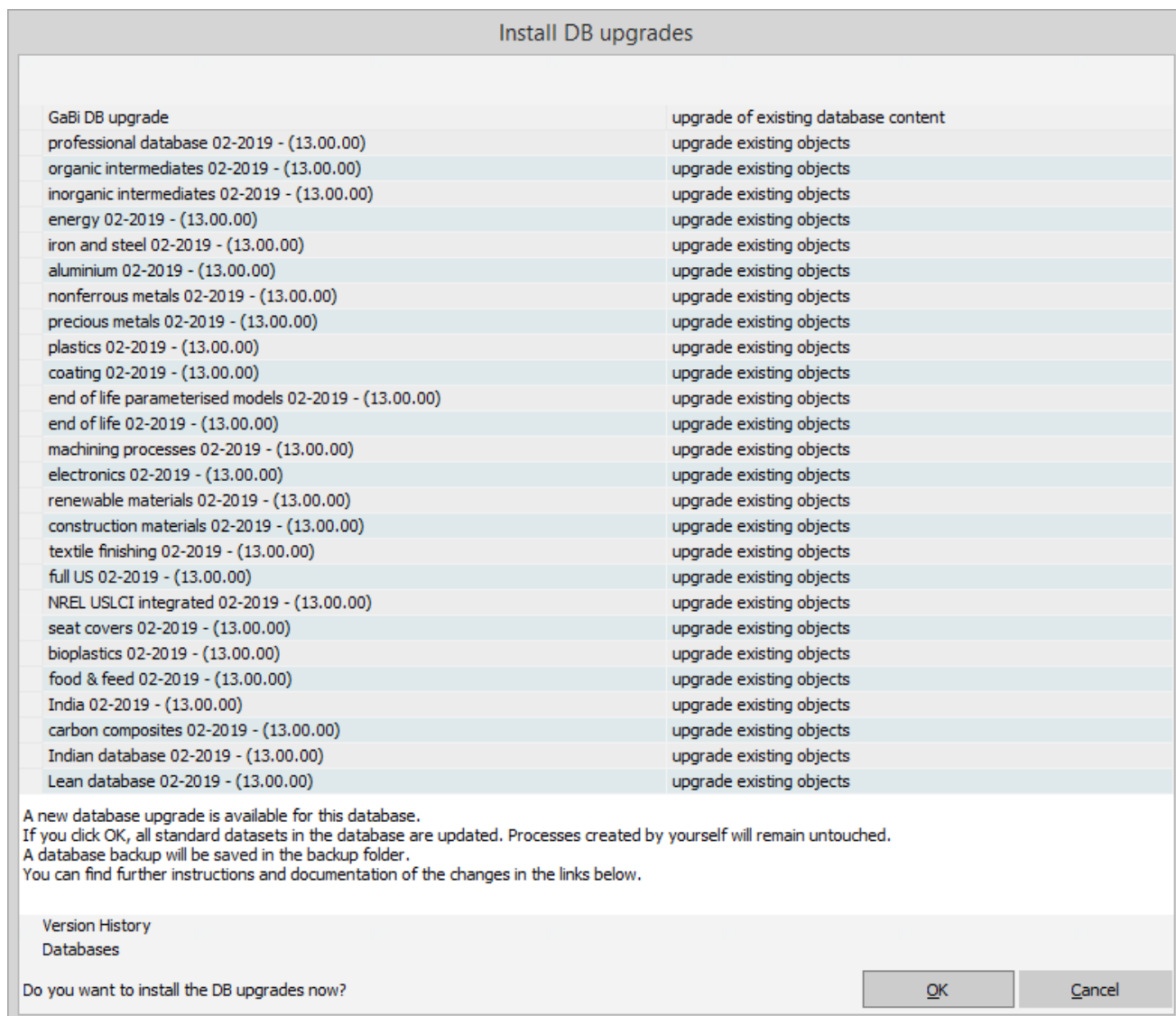


Figure 3: Database upgrade window

What happens during the upgrade?

- All Sphera standard GaBi database content you’ve used in your models, will be automatically exchanged during the upgrade.
- Processes you have created will not be touched.
- If your plan contains only processes you have created, these will not be touched. If your plan contains Sphera standard database content, these processes will be exchanged.
- None of the datasets that are new in GaBi Databases 2020 Edition will be added to your upgraded database. (Please see last section of this document if you would like to include these).



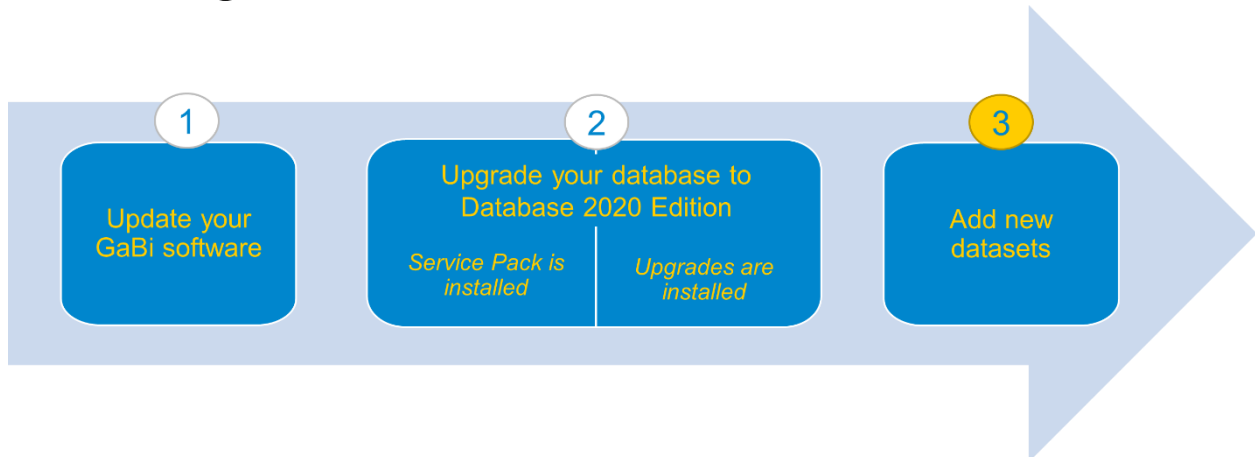
- Corrections (if any) to existing LCIA Methods, flows, etc. will be implemented, again only to objects that were delivered by Sphera; any LCIA Methods, flows, etc. that you have created will not be touched.

The upgrade is complete when you see the Log file window. Please save this protocol.

Congratulations! Your database has now been upgraded to the GaBi Database 2020 Edition! See the following section to learn how to access the new database content.



### 3. Accessing new datasets



In order to generate a database including the new datasets provided with the Gabi Database 2020 upgrade, please proceed as follows:

- Open the Menu **DATABASE** and click on **Create Database**. Now click on **Create new database** (depending on your database configuration this may also be **Professional + Extensions**)

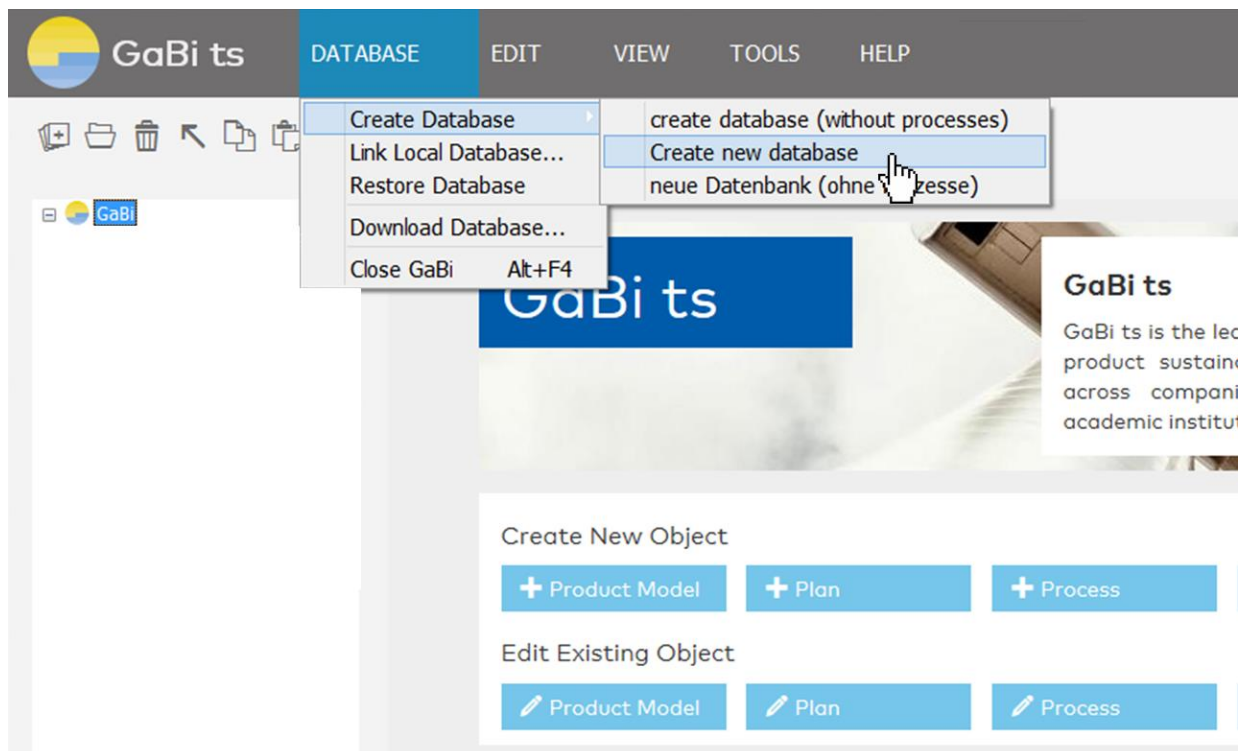


Figure 4: Creating a new database

- Select a location to save the newly created database. We recommend saving it in the standard GaBi database folder.



- Creating this database may take some time (about 1-5 hours, depending on the number of databases you've licensed) as all available database upgrades are installed to this new database. Please do not interrupt this operation!
- The new database contains all datasets of databases that you have licensed and that are included in the GaBi Databases 2020 Edition (i.e. updated GaBi Database 2020 content and new content included in 2020).
- To refresh your existing databases with the new content, you can use the drag-and-drop functionality to transfer content into your existing databases (for example, by dragging and dropping Projects). Alternatively, you can transfer the content of your own databases into the newly created database using the drag-and-drop functionality. For more details please refer to the GaBi Manual.

If you encounter any difficulties with the transfer of data or have any further questions, please send an e-mail to [gabi-support@sphera.com](mailto:gabi-support@sphera.com).



[www.sphera.com](http://www.sphera.com)

[www.gabi-software.com](http://www.gabi-software.com)

For more information contact us at:

<https://sphera.com/contact-us>

©2020 Sphera. All Rights Reserved.