

GaBi Build-it

GaBi Build-it. SUPPORTING ARCHITECTS, ENERGY PLANNERS, PROJECT MANAGERS, ENGINEERS AND DGNB AUDITORS IN CREATING SIMPLE, FAST AND PRACTICAL LIFE CYCLE ASSESSMENTS FOR BUILDINGS

Note: DGNB Deutsche Gesellschaft für Nachhaltiges Bauen. (German Sustainable Building Council)

Applications

- Simple and fast computation of complete building LCAs according to DGNB requirements
- Automated calculation of building assembly including the extended life cycle, as well as disposal and recycling scenarios («End of Life«)
- Determination of building reference values and calculating scores for the DGNB Criteria 1 - 5, 10 and 11 (e.g. global warming potential, total primary energy, etc.)
- Can be used for various building types (office, commercial, hotels, industrial buildings, ...) through modular design

Benefits

With a click GaBi Build-it provides you with:

- DGNB compliant outcome documents for the pre-certification and certification
- Professional graphical presentations for communication with clients, planners, etc.
- Result- and audit security by pre-defined computation models, complete databases, and user friendly characteristics
- Regular updates of data models

About GaBi Build-it



Sustainability is fundamentally changing the construction and real estate industry. This paradigm shift in sustainable building is the chance to create something new. To be prepared for this transition, we need innovative and easy to use tools. Software solutions that provide quick and reliable results – like this new software tool from PE INTERNATIONAL. Auditors will love GaBi Build-it.«

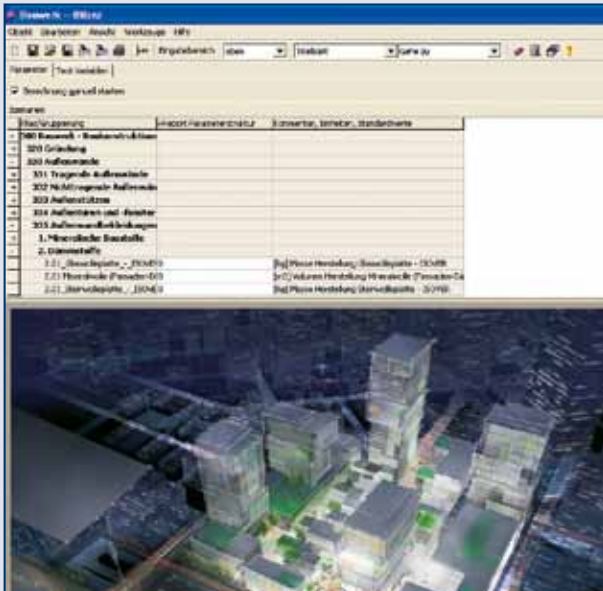
*Philipp Kaufmann
Founding President, The Austrian Sustainable Real Estate Management Council (ÖGNI)*



PE INTERNATIONAL
EXPERTS IN SUSTAINABILITY

GaBi Build-it SIMPLIFIES DGNB CERTIFICATION AND PROVIDES ECOLOGICAL COMPARISONS OF DIFFERENT PLANNING ALTERNATIVES FOR BUILDING OPTIMIZATION

After entering the component masses and user characteristics...



...Build-it generates a GaBi report containing numerical results and graphical reports which can be submitted directly to the DGNB for review.

